



LONG BEACH
CITY COLLEGE

LATINX

STUDENT RESOURCE GUIDE



TABLE OF CONTENTS

Greeting.....	3
Career & Academic Pathways.....	4
Academics	5
Success Centers	7
Admissions & Aid.....	8
Student Life.....	10
Athletics.....	12
Welcome Center & Bookstore	13
Counseling	14
Health & Wellness, COVID Resources.....	15
Student Services.....	16
Transportation Services.....	18
University Transfer.....	18
Police & Campus Safety	19
Off Campus Resources.....	20
DREAM Services.....	21
LBCC Phone Numbers - Quick Reference	22

“The ‘X’ pushes us to think about the different ways race, gender, sexuality and geographic location can impact how we and others understand Latina, Latino or Latinx experiences.”

- **Dr. Rigoberto Marquez, 2019**

¡SALUDOS!

On behalf of Long Beach City College, it is my great pleasure to welcome you, our Latinx students, to our college community. We have been serving students for more than 90 years, so whether you are looking to transfer to a university, earn a degree or a certificate, LBCC will help prepare you for success in your educational, career and life goals.

With more than half of our students identifying as Hispanic, Chicano/Chicana or Latinx, we are proud to be a Hispanic Serving Institution, a designation given to colleges with a large population of Latinx students. More recently, the College also received the Seal of Excelencia which is a national certification awarded to colleges that have made it their mission to support, promote, and accelerate Latinx student success in higher education. LBCC is proud to be the first California Community College to receive this important designation.

In light of everything going on in our country and across the globe, our college is committed to being antiracist. Furthermore, we stand in solidarity with the Black Lives Matter movement and recognize the importance of our role in coalition building across racial groups as we celebrate the 50th anniversary of the Chicano Moratorium.

With that in mind, this resource guide is one of the many ways we are committed to ensuring that our community is responsive to your needs. Through this Latinx Resource Guide, we hope to assist you in your journey through LBCC. You will find a variety of LBCC Student Services, tips to achieve academic success, information on transfer, off-campus resources and much more. More importantly, there are several resources specifically focused on serving our Latinx student community.

Our goal is to prepare students to assume their roles as culturally empowered and contributing members of the student body population here at Long Beach City College and the greater community. Together, we hope to create a thriving, equitable and inclusive campus community for all. We aim to make substantial progress toward closing education, culture and identity gaps, and provide a welcoming campus environment for all our students.

We are proud that you have selected Long Beach City College as part of your educational path and we hope that this Resource Guide will assist you on your journey to success.

¡Sí Se Puede!



Dr. Mike Muñoz
Vice President, Student Services
Long Beach City College



CAREER & ACADEMIC PATHWAYS

- Accounting
- Acting Academy
- Administration of Justice (ADT)
- Advanced Transportation Technology
- Alcohol and Drug Studies
- Android App Developer
- Anthropology (ADT)
- Architectural Design
- Art History (ADT)
- Athletic Coaching
- Baking and Pastry Arts
- Biological Sciences
- Biology (ADT)
- Business Administration (ADT)
- Business Information Worker
- Business Management
- Business, Money & Banking
- CAD Professional Certificate
- Child Development and Educational Studies
- CISCO Certified Network Associate
- Communication Studies (ADT)
- Computer Hardware Repair
- Computer Science
- Computer Technology
- Creative Writing
- Criminal Forensics
- Culinary Arts
- Customer Relations Specialists
- Cyber Security
- Dance
- Database Management
- Diagnostic Medical Imaging
- Dietetics
- Digital Design and Publication
- Digital Film Making
- Digital Media Arts
- Drafting – Architecture & Mechanical Design
- Early Childhood Education (ADT)
- Economics (ADT)
- Electrical Technology
- Elementary Teacher Education (ADT)
- Emergency Medical Technician
- Engineering
- English (ADT)
- Family and Consumer Studies
- Fashion Design
- Fashion Merchandising
- Film, Television & Electronic Media (ADT)
- Fire Science
- Floral Design
- Foreign Language
- Geography (ADT)
- Geology (ADT)
- Graphic Design
- History (ADT)
- Home Health Aide
- Horticulture
- Human Services
- Journalism (ADT)
- Kinesiology (ADT)
- Library Technician
- Linguistics
- Logistics
- Magnetic Resonance imaging
- Marketing
- Mathematics (ADT)
- Medical Assisting
- Medical Insurance Billing
- Metal Fabrication
- Microsoft Windows
- Networking Technician
- Music (ADT)
- Network Cabling Specialist
- Nursing - RN, VN
- Nursing Assistant
- Nutrition and Dietetics (ADT)
- Nutrition Assistant
- Personal Financial Planning
- Personal Trainer
- Philosophy (ADT)
- Phlebotomy

- Political Science (ADT)
- Psychology (ADT)
- Public Health Science (ADT)
- Radio/TV
- Real Estate
- Robotic Welding Automation
- Social Media Application Development
- Sociology (ADT)
- Solar Photovoltaics Installation and Design
- Spanish (ADT)
- Studio Arts (ADT)
- Theatre Arts (ADT)
- Traffic Signal Systems
- TSA Associate
- UNIX Network Administrator
- Web Development
- Welding

(ADT) indicates that this area of study has an Associate Degree for Transfer. An ADT allows a student to earn an Associate Degree at LBCC and get a guaranteed spot at a California State University.

NONCREDIT CERTIFICATES (FREE)

- Computer Hardware Repair
- Home Remodeling
- Office Technologies, Microsoft Outlook
- Office Technologies, Microsoft PowerPoint
- College and Workplace Readiness
- English as a Second Language
- English for Everyday
- Reading Skills for ESL

To explore LBCC Degrees and Certificate options, visit

<https://www.LBCC.edu/academic-programs>

ACADEMICS



ASSOCIATE IN ARTS IN SPANISH

This associate degree prepares both non-native students and heritage learners to communicate effectively in Spanish in a wide range of personal and professional settings. Students will broaden their cultural awareness and develop sensitivity to the diverse Hispanic cultures within the global community. This degree prepares students for career advancement and transfer to a four-year college or university.

LATINX LIBRARY RESOURCE GUIDE

The Latinx Library Resource Guide was designed to provide valuable resources to those interested in learning (and thinking critically) about the experiences of various Latinx groups. It is meant to empower our Latinx community with affirmation of our own cultura, identity, and valuable contributions to literature, academia, and the arts. The resource guide includes lists of books, e-books, article databases, streaming videos and accessible online resources.

<https://lbcc.libguides.com/latinx>

LATINX COURSES AT LBCC

Learn more about Latinx history, heritage and culture through these courses offered at LBCC.

Latin American Art and Architecture - ART11/11H

An introductory historical overview of the visual art and architecture of Mexico, Central America, South America and parts of the Caribbean from 1500 BCE to the late 20th century.

History of Mexico - HIST18

A comprehensive overview from Pre-Columbian era to the present focusing on social, cultural, intellectual, political and ecological Mexican intuitions.

Introduction to Chicana/o History - HIST33

An overview of major political, economic, social and cultural trends and events in the United States history from Chicana/o perspectives.

Intercultural Music - MUSIC32

An overview of various types of music from Latin America and the Caribbean.

Race & Ethnic Relations in the U.S. - SOC150

Sociological study of the diverse racial and ethnic groups in the U.S. including Latino, Asian American, African American and Native American subgroups.

Sociology of Latinos - SOC173

A survey of the sociology of Latinos in the United States with a focus on their contemporary cultural and socio-economic conditions.

PUENTE PROJECT LEARNING COMMUNITY

The PUENTE Project is a national award-winning program that has helped thousands of educationally disadvantaged students enroll in four-year colleges and universities, earn degrees, and return to the community as leaders and mentors to future generations.

Founded in 1981, The PUENTE Project helps to prepare educationally disadvantaged students for college admission and success through its combination of accelerated instruction, intensive academic counseling, and opportunities for community leadership. PUENTE is open to all students.

If you are interested in learning more about PUENTE, contact:

PUENTE Counselor: Vidal Vargas
vvargas@LBCC.edu

PUENTE English Professor: Darya Myers
d2myers@LBCC.edu

DESTINO PROGRAM

LBCC's DESTINO (Developing Engaging STEM Through Innovative New Opportunities) program aims to increase the number of underrepresented student groups in STEM pathways. These pathways include Astronomy, Biology, Chemistry, Engineering, Environmental Science, Geology, Mathematics, and Physics.

DESTINO STEM Counselor/Assistant Professor:
Robert Olmos
Rolmos@lbcc.edu
(562) 938-3071



SUCCESS CENTERS

MULTIDISCIPLINARY SUCCESS CENTERS

The Multidisciplinary Success Centers strive to contribute to the success of all Long Beach City College students by providing quality learning assistance. We have a staff of Instructional Specialists and qualified tutors ready to help, at both LAC and PCC, during all center hours. Explore the many services we offer to find the right one for your needs!

(562) 938-4699
mdsc@LBCC.edu

MATH SUCCESS CENTER

The LBCC Math Success Center provides Supplemental Learning Activities and tutoring to students of all levels.

(562) 938-4228

WRITING & READING SUCCESS CENTER

The Writing & Reading Success Center is available to help students with both writing and reading needs. The Center has a computer lab for students to use type and print class work, or a quiet place to study. Staff are also available to help with tutoring needs.

(562) 938-4520
wrsc@LBCC.edu

TUTORING CENTER

Tutoring is offered at both campuses for a variety of subjects, including math, accounting, economics, physics, geology, chemistry, biology, anatomy, physiology, philosophy, psychology, and foreign languages (including Spanish, Japanese and German), and much more! Don't see your class subject listed? Come talk to us. The Tutoring Center may still be able to help!

(562) 938-4474
tutoring@LBCC.edu



Dr. Cynthia Quintero

Professor of Spanish and Foreign Languages Department Chair
Foreign Languages

How do you identify yourself?

Latina

If there were one thing being Latinx/Chicana-o/Hispanic/etc. has taught you, what would it be?

La lucha continues. You must learn to stand up for yourself and for others.

What is your biggest passion?

Education: helping students become passionate about life, and about whatever path their education may take them to.

How do you celebrate your heritage?

I participate in many of the celebrations of my Mexican culture; I continue to educate myself by going to museum exhibits, conferences, concerts, and events related to my culture; I practice my culture everyday through my interactions with family and within my community. I breathe *mi cultura*.



Rio Medina

Career Pathways Coordinator
Student Support Services

How do you identify yourself?

Native Mexican American

Who is your Latinx/Chicana-o/Hispanic/etc. role model?

My beautiful Native-Chicana/o parents, my strong and *firme* older brother, the entire Chicano and American Indian Movement, Gloria Anzaldúa, Dolores Huerta, Subcomandante Marcos and Ramona, and all the *carnales/carnales* of South East Los Angeles.

What makes you proud to be Latinx/Chicana-o/Hispanic?

I am proud to be able to identify as Native and Mexican American. I learned at a young age, my Native and Mexican identities are one in the same. There is a sense of pride to remind folks, my family's origin started way before borders and treaties. Instead, it began as one people. My lineage is bound to ancient civilizations who created the concept of zero and created maps of the galaxies. Even though our stories and legends were burned and forced to disappear, the spirit of all the warriors and great councils is still apart of me.

ADMISSIONS & AID



ADMISSIONS & RECORDS OFFICE

The Admissions & Records office is the first stop for new students, acting as a gateway to their educational future. Admission & Records can help by assisting students with registering for classes, changing your major, transcripts, and support in understanding prerequisites and registration requirements.

(562) 938-4485

www.LBCC.edu/admissions-records

FINANCIAL AID

LBCC administers a comprehensive student financial aid program to assist students in meeting college costs. The amount of financial aid awarded varies from student to student depending on the individual's need and resources. Please contact the LBCC Financial Aid offices if you would like additional information on any of the programs listed below.

(562) 938-4485

www.LBCC.edu/financial-aid

Free Application for Federal Student Aid (FAFSA)

The application process for financial aid begins with the completion of the Free Application for Federal Student Aid (FAFSA), which is available on October 1 for the following Fall semester. Students may apply online at <http://www.fafsa.gov>.

In addition to having financial need, students must meet the following requirements:

- Be enrolled in an eligible program leading to the completion of a degree, transfer requirements, or a certificate program
- Be a U.S. citizen or eligible noncitizen
- Register with the Selective Service, if student is a male
- Not be in default on any student loan or owe a refund on any grant made under any Title IV program
- Have a high school diploma, GED or equivalent
- Maintain Satisfactory Academic Progress

Additional documentation, such as transcripts, tax returns, and verification documents may be requested from students and/or parents. Students and parents will be able to submit any requested documentation online through Campus Logic at <http://LBCC.verifymyfafsa.com>.

Pell Grants

Pell Grants are a federally funded program for undergraduates who demonstrate need. The amount of the Pell Grant varies according to eligibility (determined by the FAFSA) and enrollment. Pell Grants are limited to 12 full-time semesters of enrollment.

Federal Supplemental Educational Opportunity Grants (FSEOG)

This grant is available to undergraduate students who demonstrate exceptional financial need. The awarding of FSEOG funds is limited to the availability of funding and must be given to maximum Pell Grant recipients. If eligible, you must be enrolled in 6 units or more to receive funding.

Federal Work Study (FWS)

This program provides employment opportunities to student with financial need. Students awarded FWS receive an allocation of funds earned through part-time jobs on campus. Students are employed a maximum of 16 hours per week while school is in session. For more information please visit the Financial Aid office at LAC and PCC to learn about your eligibility to participate.

Direct Loan Program

This federal program provides loans to student to be used for educational expenses. Students having completed less than 30 units may borrow up to \$3,500 per year, and students completing over 30 units may borrow up to \$4,500 per year in subsidized loans. Interest does not accrue on a subsidized loan as long as a student remains enrolled in 6 units or more.

Cal Grants

Cal Grants are state funded grants available to California residents who qualify. U.S. citizens, permanent residents, or eligible noncitizens may apply for Cal Grants via the FAFSA or California Dream Act application at <http://dream.csac.ca.gov>. Cal Grants also involve a GPA submission requirement. The Cal Grant has a deadline of March 2 each year for all California college students. Community college students have an additional deadline of September 2 for limited remaining grants.

Scholarships

The Long Beach City College Scholarship Program awards approximately \$1 million in funds to LBCC students annually. To apply for a scholarship, students complete one online application, autobiography and two references. This one form can help you apply to the 700 scholarships available.

www.LBCC.edu/Scholarships



Ashleigh Smallwood

Program Specialist
Workforce Development

How do you identify yourself?

Latina

If there were one thing being Latinx/Chicana-o/Hispanic/etc. has taught you, what would it be?

How to overcome obstacles and persevere.

How do you celebrate your heritage?

Honoring my family and staying family oriented. Maintaining our culture.

What makes you proud to be Latinx/Chicana-o/Hispanic?

The ability to go through struggles and not become jaded or “hardened” but still embrace life with joy.



David Romero

LAC ICC President
ASB ICC

How do you identify yourself?

Latino

Who is your Latinx/Chicana-o/Hispanic/etc. role model?

My father.

What makes you proud to be Latinx/Chicana-o/Hispanic?

My differences are what make me unique. I have learned to love who I am, and how I am different.

What advice would you have for your 20-year-old self about your identity?

Stop trying to fit in with someone else’s identity. Concentrate on finding yourself.

STUDENT LIFE

LBCC has a vibrant student life that will make your college experience fun and memorable. There are hundreds of opportunities to get involved through student government, student clubs, community service, athletics, honors programs, and more.

LBCC’s Student Life office is dedicated to providing events, programs and services that enhance the academic success, personal development and sense of belonging for Latinx students at Long Beach City College.

If you want to get involved or learn more, stop by our offices at either campus.

(562) 938-4552

studentlife@LBCC.edu

www.LBCC.edu/student-affairs



Guadalupe Pasillas

Student Support Services Program Supervisor
Matriculation

How do you identify yourself?

Latinx

How has LBCC shaped your Latinx/Chicana-o/Hispanic/etc. identity?

LBCC has deepened my understanding of how gender identities impact Latinx students experience and retention.

What advice would you have for your 20-year-old self about your identity?

Embrace the use of Spanglish. Understand that it is not something to be ashamed of, on the contrary, it is a reminder that you are bilingual and capable of code switching.

ATHLETICS

Since capturing its first state title in 1928, the Long Beach City College Athletics program continues to make a name for itself locally and nationally. While academics remain a constant emphasis at LBCC, the institution is proud of its athletic program's success. To date, Long Beach City College has won 16 national titles, seven runner-up national titles, 93 state titles, and 51 state runner-up titles. Athletics is an important part of a total college experience. It provides students (whether they are the athletes competing or the student fans cheering and supporting) many opportunities to develop skills such as teamwork, leadership, and dedication to a goal. These are concepts that can be used in the classroom, as well as in the workplace. Our 18 teams give hundreds of young men and women of color this opportunity each year.

www.LBCCVikings.com



WELCOME CENTER

Are you unsure of who to contact for assistance? The Welcome Center is a one-stop-shop that provides first-time and returning student information about Long Beach City resources and services.

(562) 938-4049

opa@LBCC.edu

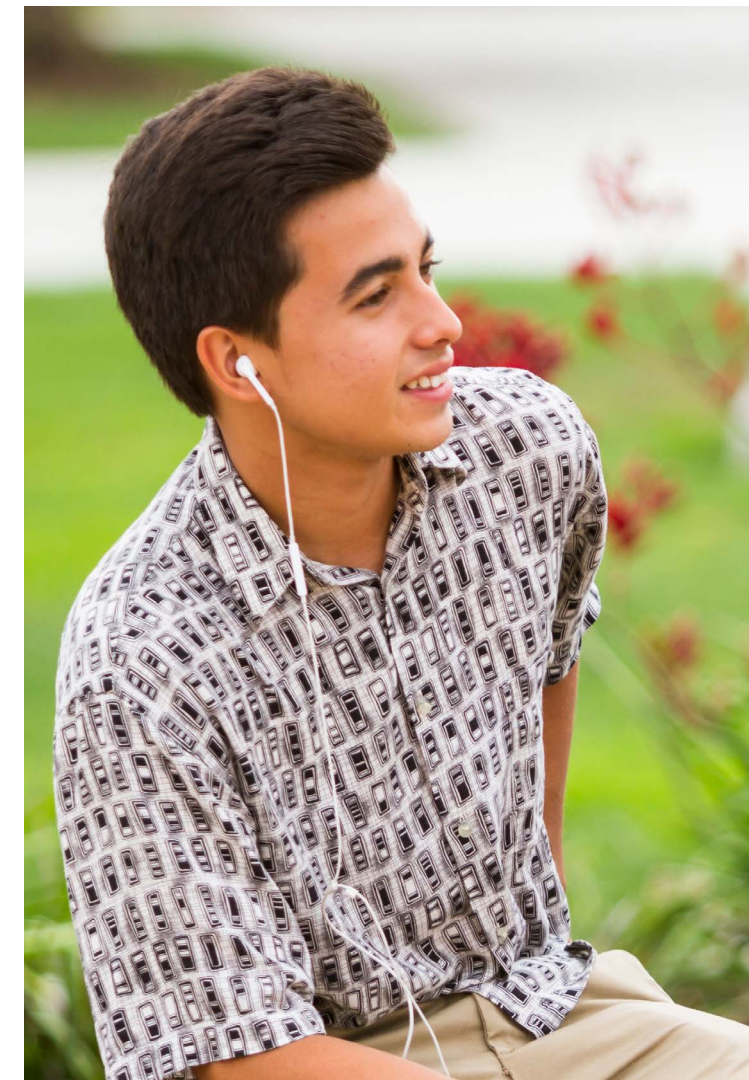
BOOKSTORE

The Bookstore sells a variety of items including textbooks, apparel, electronics, discounted software, supplies, accessories, gifts and more. We match Amazon.com and BN.com on textbook prices.

(562) 938-4223

(562) 938-3106

www.LBCC.BNCollege.com



Jose Gutierrez

Counselor
Counseling

How do you identify yourself?

Latino

Who is your Latinx/Chicana-o/Hispanic/etc. role model?

Jorge Ramos, known as "The Walter Cronkite of Latino America."

If there were one thing being Latinx/Chicana-o/Hispanic/etc. has taught you, what would it be?

Grit, keep going, keep moving, always forward!

What makes you proud to be Latinx/Chicana-o/Hispanic?

Who am I today is a manifestation of my ancestors' aspirations and dreams.



Nohel C. Corral

Dean of Counseling and
Student Support Services

How do you identify yourself?

Mexican-American; Latino

Who is your Latinx/Chicana-o/Hispanic/etc. role model?

My parents, José and Dolores, are my role models. Although neither one has more than a 4th grade education, they taught me to dream big and the importance of education, hard work, and family.

How has LBCC shaped your Latinx/Chicana-o/Hispanic/etc. identity?

I see the friends I grew up with and myself in the student population we serve at LBCC. Working here has shaped my sense of giving back to a community that supported my development. Approximately 15 years ago, I started as a counseling intern at LBCC.

COUNSELING

Counseling services at LBCC are in place to help students identify and clarify personal, career and educational goals.

(562) 938-4561 | (562) 938-3920 | www.LBCC.edu/counseling

CALWORKS

CalWORKs is California's Welfare-to-Work program that gives cash aid and services to eligible needy California families.

(562) 938-3116
calworks@LBCC.edu

<https://www.LBCC.edu/calworks>

EXTENDED OPPORTUNITY PROGRAMS AND SERVICES (EOPS)

Extended Opportunity Programs and Services (EOPS) is a state funded retention and support program. The mission of EOPS is to identify and assist students who are affected by social, economic, educational, or language disadvantages.

(562) 938-4273
www.LBCC.edu/extended-opportunity-programs-and-services

TRIO GO PROJECT

The TRiO GO Project is a comprehensive program of academic support and personal development services for low-income, first-generation college, and disabled students to achieve retention and graduation rates that exceed that of the general student body.

(562) 938-3233
goproject@LBCC.edu

UPWARD BOUND PROGRAM

The goal of the Long Beach City College TRiO Upward Bound Program is to prepare high school students from the Long Beach Unified School District. The Program accomplishes this objective by enhancing participants' academic skills, personal motivation and confidence that is needed to succeed in college.

(562) 938-3177
upwardbound@LBCC.edu



DREAM SERVICES

Long Beach City College is proud to take a stand and support our undocumented students. The Dream Center is dedicated to serving the AB540 and undocumented student population through advocacy, guidance, and support.

(562) 938-5101
dreamservices@LBCC.edu

INTERNATIONAL STUDENT SERVICES

The International Student Programs (ISP) offers specialized support and immigration advising to F-1 and M-1 status students on campus, as well as assistance to prospective students during the application process.

(561) 938-4745
international@LBCC.edu

HEALTH & WELLNESS

LBCC STUDENT HEALTH SERVICES

The LBCC Student Health Services (SHS) supports students by providing quality and accessible primary care, and mental health services and education. Student Health Services partners with the City of Long Beach and the surrounding community to provide comprehensive clinical services to students. We engage students in making informed decisions about their healthcare, and empower them to be self-directed healthcare consumers.

(562) 938-4210
www.LBCC.edu/Student-Health-Services

MENTAL HEALTH SERVICES (MHS)

Mental Health Services are designed to serve students who are experiencing stress or other emotional difficulties. You have paid a student health fee that provides you up to six free individual therapy sessions during a regular semester, based on clinical need. Services assist with issues such as stress, anxiety, panic attacks, depression, grief and loss, identity struggles, relationship difficulties, substance abuse and eating disorders. Each therapy session is approximately 50 minutes.

(562) 938-3987

“OVER-THE-COUNTER” OTC NUTRITION

The Viking Vault

During Covid-19, the Viking Vault will be hosting Grab-n-Go events for you to pick up a free, pre-packaged bag of non-perishable groceries to last you through a couple weeks. The Grab-n-Go's take place every 2 weeks at both LAC and PCC campuses, and are drive-thru events where you can stay in your car the whole time to receive your food. We are currently planning our next event, so check your email often for updates on the next Grab-n-Go date and time.

(562) 938-4756
www.LBCC.edu/basic-needs-program

COVID RESOURCES

CAL FRESH

CalFresh is available for qualifying students to make sure you not only have food temporarily, but can receive additional aid to purchase food and eat healthier. LBCC has a representative that works specially with our students to make sure you are eligible and to walk you through the entire application process. You can email her anytime and let her know you are enrolled as a LBCC student and want to apply for Cal-Fresh benefits. Students can receive awards up to \$193.00 a month for groceries.

LBCC CalFresh representative: Cinthia Onoa
(323) 234-3030 ext. 169
conoa@lafoodbank.org

FEEDING AMERICA “FIND YOUR LOCAL FOODBANK”

In case you need additional food resources beyond the Viking Vault, you can use this link to find a food pantry in your community. You can search by zip code on the Feeding America website.

www.feedingamerica.org/find-your-local-foodbank

211 - HOUSING SERVICES HOTLINE

211 is a 24/7 hotline that is available for you to call in an emergency situation regarding homelessness, violence in the household, healthcare, and other social services. You can call the number anytime, and also browse their resources on their website.

www.lbcc.edu/sites/main/files/file-attachments/211_la_county_health_and_social_service_hotline_english.pdf?1597177049 **www.211la.org**

FREE LA COUNTY HOTSPOT LOCATOR

Follow the link below to an interactive map that shows WIFI locations throughout LA County. If you require additional help, please dial 211 or go to **211.org**.

<https://lacounty.maps.arcgis.com/apps/webappviewer/index.html?id=26159b0526e64bea94533e89da583b89>

STUDENT SERVICES

Long Beach City College aims to support our Latinx students by offering a variety of services to ensure that our students are successful during their time here.



ADULT EDUCATION

The Adult Education program offers short-term personal and professional development courses that are open year-round to members of the community.

(562) 938-3248

aep@LBCC.edu

www.LBCC.edu/Adult-Education

CAREER CENTER

The Career Center helps students explore career interests and learn about what degree programs are right for them.

(562) 938-4360

www.LBCC.edu/Career-Center

CHILD DEVELOPMENT CENTER

The Child Development Center (CDC) and Learning Lab offers year-round half-day and full-day preschool programs for children ages 2-5. The Center serves children of students, faculty, staff and the community, with locations at both the Liberal Arts Campus and the Pacific Coast Campus.

www.LBCC.edu/Child-Development-Center

LBCC CHROMEBOOK & HOTSPOT LOAN PROGRAM

LBCC Students who are in need of a computer or hotspot can submit a request to the LBCC Student Emergency Aid Application. Supplies are limited, if no hotspots are available, students are encouraged to use the free LA County hotspot locator below.

(562) 938-4049

emergencyaid@LBCC.edu

Apply [here](#).

DISABLED STUDENTS PROGRAMS & SERVICES

Disabled Students Programs and Services (DSP&S) at Long Beach City College provides many support services that enable students with disability-related limitations to participate in the College's programs and activities. DSP&S offers a wide range of services that compensate for a student's limitations, such as note-taking assistance, interpretive services, test taking assistance, and alternative media formats at no cost to students.

(562) 938-4558

TTY Phone: (562) 938-4833

dsps-staff@LBCC.edu

www.LBCC.edu/disabled-student-services

LGBTQIA+ RESOURCES

LBCC is committed to serving members of the campus community who identify as lesbian, gay, bisexual, transgender, and queer. Visit the LBCC website to find resources and information on campus and community-based programs and services that support the LGBTQ+ community.

www.LBCC.edu/lgbtq-resources

VETERANS SERVICES

The Veterans Services Office (VSO) provides a caring and supportive environment for veterans and their dependents by assisting with services they need for enrollment, receiving their VA benefits, and other resources.

(562) 938-4162

www.LBCC.edu/Veterans-Services

STUDENT TECHNOLOGY HELP DESK

The Student Technology Help Desk (STHD) supports all LBCC students in accessing and successfully using LBCC technology. All assistance provided is FREE for LBCC students.

(562) 938-4250

sthd@LBCC.edu



Sonia De La Torre

Associate Dean, Student Support Services
Counseling & Student Support Services

How do you identify yourself?

Mexicana; Latina

If there were one thing being Latinx/Chicana-o/Hispanic/etc. has taught you, what would it be?

Being Latina has taught me to embrace the beauty of my culture. To have pride in the traditions, customs, and cultural elements that inform the very essence of my identity. My culture has also taught me to appreciate the beauty of other peoples' cultures.

What advice would you have for your 20-year-old self about your identity?

It evolves...and it's okay. You get to define who you are and how you express your cultural/ethnic identity. Others don't get to define that for you.



Dr. Mike Muñoz

Vice President
Student Services

How do you identify yourself?

Latino; Latinx; Chicano

What makes you proud to be Latinx/Chicana-o/Hispanic?

I am proud of the richness and legacy of the Latinx community. I am also proud of the struggles and sacrifices made of so many Latinx peoples in pursuit of a better life for themselves and their families.

What is your biggest passion?

My biggest passion is social justice and working for communities who have been marginalized.



Otto Figueroa

Associate Professor
Physical Science - Geology

How do you identify yourself?

Latino

How has LBCC shaped your Latinx/Chicana-o/Hispanic/etc. identity?

I'm much more in touch with my heritage now than before I came to work at LBCC. I was usually the only person of color at all of my previous jobs.

How do you celebrate your heritage?

I celebrate my heritage every time I cook the Guatemalan dishes that I learned from my mother.

Who is your Latinx/Chicana-o/Hispanic/etc. role model?

Jorge Ramos (journalist) sets the standard for credibility and moral strength. Che Guevara and Emiliano Zapata stood up for the most vulnerable in their societies. And finally, Carlos Fuentes and Gabriel Garcia Marquez who wrote of the Latina/o experience and the exploitation of Latina America by external powers.

TRANSPORTATION SERVICES

LONG BEACH TRANSIT TAP STUDENT BUS PASS

If you're traveling to the College by using public transportation, Long Beach Transit offers a reduced-fare student Transit Access Pass. LBT Student TAPs are \$40/month (compared to the regular \$65/month!).

www.LBCC.edu/post/transportation

STRONG BEACH BUS PASS PILOT PROGRAM

Long Beach City College is partnering with Long Beach Transit to provide free TAP passes for all full-time students who are in good academic standing. Full time is defined as 12 units or more. Good academic standing is defined as having a cumulative G.P.A. (grade point average) of 2.0 or better AND 50% completion of all units attempted.

(562) 938-3241

basicneeds@LBCC.edu

UNIVERSITY TRANSFER

THE TRANSFER CENTER AT LBCC

Are you thinking about transferring to a four-year university after you complete your studies at LBCC? The Transfer Center at LBCC can assist with a smooth transition to university life. A variety of services such as university appointments, transfer fairs, admissions workshops and university tours are available to you. LBCC students also have a guaranteed transfer to CSU Long Beach through the Promise 2.0 initiative. Visit the Transfer Center to explore transfer options, ask your questions about transferring, and further your education goals.

(562) 938-4670

www.LBCC.edu/transfer-center

POLICE & CAMPUS SAFETY

Contact the Police Department for the following:

- Safety Escorts
- Keys locked in vehicles
- Lost & Found

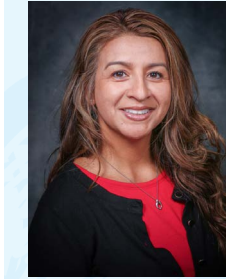
LAC Building X, south of Lew Davis Street

Mon-Fri, 8 a.m.-5 p.m.

(562) 938-4910 or

(562) 435-6711 for non-emergencies

After business hours call the General Service number, or 9-1-1 for an emergency.



Daisy Cook

Mental Health Clinician
Student Health Services

How do you identify yourself?

Latina

Who is your Latinx/Chicana-o/Hispanic/etc. role model?

My Latinx role model is human rights activist and Nobel Peace Prize recipient, Rigoberta Menchú.

How do you celebrate your heritage?

I celebrate my heritage by sharing and listening to music that my grandparents, aunts, uncles and parents enjoyed dancing to, and eating traditional Guatemalan food. Also, by sharing *cuENTOS* (story or tales) told to me by different generations within my family.



Lupita Martinez

Mental Health Clinician
Student Health Services

How do you identify yourself?

Chicana

What makes you proud to be Latinx/Chicana-o/Hispanic?

I was raised in Inglewood and we came from a very humbling background. As a Chicana, I am proud to have worked at a very young age because it taught me the value of money and hard work. My parents and I used to sell leather belts in the swap meet, and even though I was embarrassed at the time, I am truly grateful for those early mornings on the weekends.

How do you celebrate your heritage?

Every day is a celebration, most times without noticing. I speak Spanish daily, I visit my parents twice a week, I listen to Rock en Español, I call my mom daily, I wear my dangling earrings and bright colored tops - and I do it all without any shame/fear, something others may not have the privilege of doing. I honor my heritage not only for myself and my family but also for my community.

OFF-CAMPUS RESOURCES



SPOTLIGHT ORGANIZATION: CENTRO CHA

Centro CHA exists with the mission to increase the quality source of programs and services that are dedicated to improve the social and economic development of low-income youth and families in Long Beach. Their vision of a thriving community is one where investments for low-income communities and environments are a priority, and where residents are connected, civically engaged, working, and living in sustainable homes, schools, and communities.

www.centroCHA.org



Sofia F. Beas

Professor, Academic Counselor
Counseling

How do you identify yourself?

Latina, Mexican-American

How has LBCC shaped your Latinx/Chicana-o/Hispanic/etc. identity?

Being one of the few Latina faculty since I began 29 years ago has meant that I have had to be an advocate for my students and colleagues. I never forget where I came from and know that I have been blessed to be where I am at today.

What advice would you have for your 20-year-old self about your identity?

I would tell my 20-year-old self to be *orgullosa* (proud) of where she comes from. And, work hard so that your parents' hardships and struggles will have been worth it.

DREAM SERVICES

Long Beach City College is proud to take a stand and support our undocumented students. The Dream Center is dedicated to serving our student population through advocacy, guidance, and support. Students can attend any public institution in California and pay lower in-state tuition instead of out-of-state tuition if they qualify for AB- 540. AB-540 is a state law also known as the *California Nonresident Tuition Exemption, or the AB-540 Affidavit*.

CALIFORNIA DREAM ACT

AB-540 eligible students can also apply for additional state aid through the California DREAM Act at <https://dream.csac.ca.gov>

Students should apply before March 2 annually for the next school year. DREAM Services provides academic, career, and transfer counseling along with textbook and laptop lending assistance. Please contact the DREAM Services area if you need support with your affidavit, financial aid, or need counseling services.

(562) 938-4561

dreamservices@LBCC.edu

www.LBCC.edu/dream-services



Vivian Malauulu

Board of Trustees President, 2019-20
Long Beach Community College District

“I am very proud of my Latino heritage, but I am most proud of my Honduran background, specifically. My poor little country gets so much negative publicity - and that motivates me to change the perception that others have of Hondurans. If I am the only *Catracha* that you ever meet - I want you to perceive Hondurans as Hard-working, Honest, and Humble. The ‘H’ means so many things to me, but today it means HAPPY!”

– Board President Vivian Malauulu

Vivian Malauulu is the first Latina elected to the Long Beach Community College District Board of Trustees to represent Area 2.

President Malauulu has more than 20 years of experience teaching a variety of high school subjects. She has a bachelor’s in Journalism from CSU Northridge, a master’s in Educational Administration from CSU Dominguez Hills, and four K-14 bilingual teaching credentials. President Malauulu taught Journalism part-time at LBCC prior to her election. She is a full-time registered longshore worker. She regularly contributes to various media outlets as a bilingual freelance journalist.

She was born Vivian Ramirez in an impoverished barrio of San Pedro Sula, Honduras to a young, unwed mother. They migrated to California in 1981 pursuing what all immigrants want from America – the chance of a better life. President Malauulu was seven years old and spoke zero English.

In spite of working full-time in the longshore industry, serving at LBCC, and raising a very busy family, President Malauulu continues to be involved in the community. She credits her strong faith in God, her passion for education, and her tough work ethic for guiding her on the road to public service.

QUICK REFERENCE

Click on the **PROGRAMS** to learn more.

ADMISSIONS & RECORDS

- (562)938-4485
- admissions@LBCC.edu

CALWORKS

- (562)938-3116
- calworks@LBCC.edu

CASHIER'S OFFICE

- (562)938-4010
- cashier_office@LBCC.edu

COUNSELING

- (562)938-4561
- fcounter-lac@LBCC.edu

DESTINO

- (562) 938-3071
- rolmos@lbcc.edu

DISABLED STUDENTS PROGRAMS & SERVICES

- (562)938-4558
- dsps-staff@LBCC.edu

DREAM SERVICES

- (562)938-5101
- dreamservices@LBCC.edu

ENGLISH AS A 2ND LANGUAGE CENTER

- (562)938-3160
- dd140-esl@LBCC.edu

EXTENDED OPPORTUNITY PROGRAMS & SERVICES (EOPS)

- (562)938-4273
- eops@LBCC.edu

FINANCIAL AID

- (562)938-4485
- financialaid@LBCC.edu

GO PROJECT (TRIO GO PROJECT)

- (562)938-3233
- goproject@LBCC.edu

GUARDIAN SCHOLARS

- (562)938-3216
- mkeith@LBCC.edu

HONORS PROGRAM

- (562)938-4354
- honors@LBCC.edu

INTERNATIONAL STUDENT SERVICES

- (562)938-4745
- international@LBCC.edu

JUSTICE SCHOLARS

- (562) 938-3208
- justicescholars@LBCC.edu

LBCC CHILD DEVELOPMENT CENTER (CDC)

- (562)938-4253

LEARNING & ACADEMIC RESOURCES

- (562)938-4699

LIBRARY

- (562)938-4232

MATH SUCCESS CENTER

- (562)938-4228

MULTIDISCIPLINARY SUCCESS CENTER

- (562)938-4699
- mdsc@LBCC.edu

NEXT UP

- (562)938-3218
- nextup@LBCC.edu

POLICE AND CAMPUS SAFETY

- (562)938-4910

PUENTE PROGRAM

- (562)938-3095
- wvargas@LBCC.edu

STUDENT HEALTH SERVICES

- (562)938-4210

STUDENT LIFE

- (562)938-4978
- studentlife@LBCC.edu

STUDENT TECHNOLOGY HELP DESK

- (562)938-4250
- sthd@LBCC.edu

TRANSFER SERVICES

- (562)938-4670
- transferacademy@LBCC.edu

TUTORING CENTER

- (562)938-4474
- tutoring@LBCC.edu

UMOJA

- (562)938-3159
- Iroper@LBCC.edu

VETERANS SERVICES

- (562)938-4162
- veterans@LBCC.edu

VIKING BOOKSTORE

- (562)938-4223

WELCOME CENTER

- (562)938-4049
- opa@LBCC.edu

WORKFORCE CENTER

- (562)938-3248
- wfdev@LBCC.edu

WRITING/READING SUCCESS CENTER

- (562)938-4520
- wrsc@LBCC.edu

CONTRIBUTORS

Jason Avila

Sofia Beas

Andrew Boquiren

Centro CHA

Shyra Compton

Daisy Cook

Nohel C. Corral

Sonia De La Torre-Iniguez

Otto Figueroa

Jose Gutierrez

William Husak

Jake Kailani

LBCCD Board of Trustees President

Vivian Malauulu

Marinda Martin

Lupita Martinez

Rio Medina

Deborah Miller-Calvert

Dr. Mike Muñoz

Linda Olmos

Ruben Page

Lupe Pasillas

Cynthia Quintero

David Romero

Ashleigh Smallwood

Stacey Toda

Vidal Vargas

Nevon Watson



LONG BEACH
CITY COLLEGE

www.LBCC.edu/Latinx

   @LBCityCollege