



# ECI

## COURSE RECOMMENDATIONS FOR

# INDIVIDUAL DUAL ENROLLMENT

**EARLY COLLEGE INITIATIVES**

[www.lbcc.edu/earlycollege](http://www.lbcc.edu/earlycollege)

All of the courses listed in this flyer have been curated in partnership with LBCC & LBUSD Administrators to help guide **Individual Dual Enrollment** students in the selection of their courses. Each course has been appropriately broken down by recommended grade levels. However, students may be eligible to take other LBCC courses not listed on this flyer.

[Prior to enrolling in any of our courses, we request that students meet with an Early College Initiative's Counselor AND their School Counselors!](#)

To speak with an ECI Counselor, please visit [ECI's Online Appointment System](#) to make an appointment.

Some of the courses listed in this flyer may meet:

1. LBSUD course equivalency

- If a course meets a LBUSD high school equivalency, it may count for the following credits:
  - 1 unit = 3.33 high school credits
  - 2 units = 6.67 high school credits
  - 3+ units = 10 high school credits (one full high school year)


2. LBCC general education and/or major preparation

3. Other community colleges' general education and/or major preparation  
*(if applicable--please check with your secondary college)*

4. CSU and/or UC general education and/or major preparation

To verify if the courses are offered during a particular term, please visit [LBCC's Schedule of Courses website](#).

If you need course enrollment assistance, please visit [ECI's Virtual Help Desk](#), available on Mondays through Thursdays, from 3-5pm.

 (562) 938-5272

 [earlycollege@lbcc.edu](mailto:earlycollege@lbcc.edu)

 Pacific Coast Campus, AA-109

**Note: This document is subject to change. Please consult with a Long Beach City College counselor regarding all posted contents.**

## ENRICHMENT FOR MIDDLE/HIGH SCHOOL STUDENTS

### **COUNS 1: Orientation to College Success**

#### **1 Unit | UC and CSU Transferable**



- Course Description: The course contains an introduction to the principles of student development theory, student conduct, academic procedures, policies, goal setting, educational planning, and college and student support services. Students will learn the various academic opportunities of higher education in California, explore different major, and develop a tentative educational plan.
  - Terms: Summer, Fall, Winter, and Spring
- 

### **COUNS 48: Career Exploration**

#### **1 Unit | CSU Transferable**



- Course Description: Designed for students who are undecided about their career and/or educational goals. It provides an introduction to a career decision-making model, including personal assessment, self-understanding, career and labor market research, integration of information and goal setting. The course emphasizes one's self-description as it impacts career choices.
  - Terms: Summer, Fall, Winter, and Spring
- 

### **COUNS 49A: College Study Techniques**

#### **1 Unit | CSU Transferable**



- Course Description: Course content will cover specific techniques such as effective time management plan, note taking skills, textbook reading and test taking skills. Students will identify their own learning styles and important factors to college success through self-assessment and interpretation.
  - Terms: Fall, Winter, and Spring
- 

### **COUNS 49: College Study Techniques**

#### **2 Units | CSU Transferable**



- Course Description: Similar content as COUNS 49A. Additionally, topics will be presented as a practical and applicable approach to specific strategies for gaining academic competency and achieving self-confidence for academic success.
- Terms: Summer, Fall, Winter, and Spring



(562) 938-5272



[earlycollege@lbcc.edu](mailto:earlycollege@lbcc.edu)



Pacific Coast Campus, AA-109

Note: This document is subject to change. Please consult with LBCC Counseling.

## LANGUAGES FOR ALL MIDDLE/HIGH SCHOOL STUDENTS



### **CHIN 1: Elementary Chinese 1**

**5 Units | UC and CSU Transferable**

- Course Description: This course introduces students to the standard Chinese language (Mandarin). Students will study grammar, vocabulary, pronunciation, and culture. Students will develop competency at a medium elementary level in listening, speaking, reading, and writing. The course will present everyday situations and topics in the context of Chinese cultural traditions. This course is not recommended for native speakers. This course is comparable to two years of high school Chinese.



### **FREN 1: Elementary French (OR FREN 1C)**

**5 Units | UC and CSU Transferable**

- Course Description: This course provides an introduction to French vocabulary and grammar structures, emphasizing listening, speaking, reading, and writing. This course is not recommended for native speakers of French or for students who have recently completed one year of high school French with a grade of B or better. NOTE: This course is comparable to two years of high school French.



### **GER 1: Elementary German**

**5 Units | UC and CSU Transferable**

- Course Description: This course is an introduction to the German language and emphasizes the four skills necessary for language acquisition: listening, speaking, reading and writing. Students will learn the sound system and elementary grammatical structures to be able to communicate at a basic level. This course exposes students to everyday situations and cultural topics of the German speaking world. It is not recommended for native speakers.



### **ITAL 1: Elementary Italian (OR ITAL 1C)**

**5 Units | CSU and UC Transferable**

- Course Description: This course introduces students to the four skills necessary for language acquisition: listening, speaking, reading and writing. Students will learn the sound system and basic grammatical structures. This course exposes students to everyday situations and cultural topics of the Italian language, culture, and civilization.



(562) 938-5272



[earlycollege@lbcc.edu](mailto:earlycollege@lbcc.edu)



Pacific Coast Campus, AA-109

## LANGUAGES FOR ALL MIDDLE/HIGH SCHOOL STUDENTS



### **JAPAN 1: Elementary Japanese**

5 Units | **UC and CSU Transferable**

- **Course Description:** This course introduces students to the Japanese language. Students will study grammar, vocabulary, pronunciation, and culture. Students will develop competency at a medium elementary level in listening, speaking, reading, and writing. The course will present everyday situations and topics in the context of Japanese cultural traditions. This course is not recommended for native speakers. This course is comparable to two years of high school Japanese.



### **SPAN 1: Elementary Spanish (OR SPAN 9)**

5 Units | **UC and CSU Transferable**

- **Course Description:** This is the first course in Spanish. It introduces students to the four skills necessary for language acquisition: listening, speaking, reading and writing. It is not recommended for native speakers of Spanish or for students who have completed one year of high school Spanish with a grade of B or better. Students will learn the sound system and basic grammatical structures. This course exposes students to everyday situations and cultural topics of the Hispanic world.



(562) 938-5272



[earlycollege@lbcc.edu](mailto:earlycollege@lbcc.edu)



Pacific Coast Campus, AA-109

## 9TH-12TH GRADE HIGH SCHOOL STUDENTS



### **COMM 10: Elements of Public Speaking** 3 Units | **UC and CSU Transferable**

- Course Description: Students will learn and practice the strategies to manage speech anxiety, and will understand and apply the concepts and skills of effective speaking through the analysis, construction and delivery of various types of speeches.
- Terms: Summer, Fall, Winter, and Spring
- 
- Fulfills a LBCC, and CSU Requirements--  
*please see an ECI Counselor for more information*

### **COMM 20: Elements of Interpersonal Communication** 3 Units | **CSU Transferable**



- Course Description: This course takes an experiential learning approach to understanding the process of communication at both the intrapersonal and interpersonal levels. Time will be devoted to the study of theories, practices and concepts within the field of communication studies.
- Terms: Summer, Fall, Winter, and Spring
- 
- Fulfills a LBCC, and CSU Requirement--  
*please see an ECI Counselor for more information*

## 11TH-12TH GRADE HIGH SCHOOL STUDENTS



### **AH 60: Medical Terminology** 3 Units | **CSU Transferable**

- Course Description: Designed to develop a comprehensive medical vocabulary. Emphasis will be placed on spelling, definitions, and pronunciation of terms related to the body systems and medical specialties. To assist students with the challenges of the course, students are required to complete 3 hours of Supplemental Learning Assistance activities in a Multidisciplinary Success Center.
- Terms: Summer, Fall, and Spring



(562) 938-5272



[earlycollege@lbcc.edu](mailto:earlycollege@lbcc.edu)



Pacific Coast Campus, AA-109



## **ADJUS 2: Intro to Admin of Justice**

**3 Units | CSU Transferable**

- Course Description: The history and philosophy of the criminal justice process and its relationship to our dual court system is discussed. The role relationship and interdependency of the Criminal Justice System components is reviewed.
- Terms: Summer, Fall, Winter, and Spring



## **ANTHR 1: Physical Anthropology (3 Units)** (UC and CSU Transferable)

- Course Description: Course introduces the concepts, methods of inquiry, and theory of biological evolution and their application to the human species. Issues and topics will include the principles of genetics and evolution, human variation and biocultural adaptations, among others.
- Terms: Summer, Fall, Winter, and Spring
- 
- Fulfills a LBCC, CSU, and UC Requirements--  
*please see an ECI Counselor for more information*



## **ASTR 1: Elementary Astronomy** **3 Units | UC and CSU Transferable**

- Course Description: Course is an introduction to astronomy. Topics to be covered include the physical nature of the solar system, stars and stellar systems, galaxies and the universe as a whole.
- Terms: Summer, Fall, Winter, and Spring
- 
- Fulfills a LBCC, CSU, and UC Requirements--  
*please see an ECI Counselor for more information*



## **ETHST 1: Introduction to Ethnic Studies** **3 Units | CSU Transferable**

- Course Description: Course will take an interdisciplinary and intersectional approach to the examination of the historical, cultural, economic and political issues that impact ethnic/racial groups within the United States, with a specific focus the African American, Asian American, Indigenous/American Indian/Native American, and Chicana/o and Latina/o communities.
- Terms: Summer, Fall, Winter, and Spring
- 
- Fulfills a LBCC, and CSU Requirements--  
*please see an ECI Counselor for more information*



(562) 938-5272



[earlycollege@lbcc.edu](mailto:earlycollege@lbcc.edu)



Pacific Coast Campus, AA-109



## **GBUS 5: Introduction to Business**

### **3 Units | UC and CSU Transferable**

- Course Description: Designed to provide a basic understanding of the business environment, with a special emphasis on globalization and ethics/social responsibility, prime operating functions of management/organization, human resources, marketing, info/tech and accounting/finance.
- Terms: Summer, Fall, Winter, and Spring



## **HIST 11: Hist/Modern America (Rec-Present)**

### **3 Units | UC and CSU Transferable**

- Course Description: This course is a survey of major political, economic, social, diplomatic and intellectual trends and events in United States history from the end of Reconstruction (1877) to the present. The course emphasizes the building of the modern industrial society, growing involvement in international relations, the evolution of a multi-ethnic community and social reform movements of the 20th and 21st century.
- Terms: Summer, Fall, Winter, and Spring
- ---
- Fulfills LBUSD's US History Requirement--  
*please see a LBSUD Counselor for more information*
- Fulfills a LBCC, CSU, and UC Requirements--  
*please see an ECI Counselor for more information*



## **HIST 25: History of American Women**

### **3 Units | UC and CSU Transferable**

- Course Description: This course is a survey of the history of women in America from the pre-colonial period to the present. Emphasis is on the relevant political, economic, intellectual, and social roles filled by American women.
- Terms: Summer, Fall, Winter, and Spring
- ---
- Fulfills LBUSD's US History Requirement--  
*please see a LBSUD Counselor for more information*
- Fulfills a LBCC, CSU, and UC Requirements--  
*please see an ECI Counselor for more information*



(562) 938-5272



[earlycollege@lbcc.edu](mailto:earlycollege@lbcc.edu)



Pacific Coast Campus, AA-109

### **HLED 3: Contemporary Health Problems** **3 Units | UC and CSU Transferable**



- Course Description: This course is designed to explore today's major health issues and behaviors in the various dimensions of health. The importance of individual responsibility for personal health and the promotion of informed, positive health behaviors is emphasized. Topics that will be discussed include the dimensions of health, vital statistics, infectious diseases, chronic diseases, nutrition, and more!
- Terms: Summer, Fall, Winter, and Spring
- Fulfills a LBCC, and CSU Requirements--  
*please see an ECI Counselor for more information*

---

### **HLED 21: Introduction to Public Health** **3 Units | CSU Transferable**



- Course Description: Course provides an introduction to the discipline of Public Health and satisfies the requirements of the Public Health Transfer Model curriculum. Students will gain an understanding of the basic concepts and terminologies of public health, and the history and accomplishments of public health officials and agencies. An overview of the functions of various public health professions and institutions, and an in-depth examination of the field of public health will be addressed.
- Terms: Summer, Fall, Spring
- Fulfills a LBCC, CSU, and UC Requirements--  
*please see an ECI Counselor for more information*

---

### **LEARN 11: Learning & Academic Strategies** **3 Units | UC and CSU Transferable**



- Course Description: Designed to assist students in developing an understanding of learning theories and academic principles, concepts, and strategies. (*Students are required to complete 3 hours of Supplemental Learning Assistance activities in a Multidisciplinary Success Center*).
- Terms: Summer, Fall, Winter, and Spring
- Fulfills a CSU Requirement--*please see an ECI Counselor for more information*



(562) 938-5272



[earlycollege@lbcc.edu](mailto:earlycollege@lbcc.edu)



Pacific Coast Campus, AA-109



## **MUSIC 89: History of Rock**

### **3 Units | UC and CSU Transferable**

- Course Description: The course will be treated as a chronological study. This allows for brief overviews of society in periods and then illustrates how the music of a particular period either supports or contradicts societal views. Main emphasis of study will be from 1955 to the present.

Terms: Summer, Fall, Winter, and Spring

- Fulfills LBUSD's Performing Arts Requirement--*please see a LBSUD Counselor for more information*
- Fulfills a LBCC, CSU, and UC Requirements--*please see an ECI Counselor for more information*



## **NUTR 21: Food Selection & Meal Prep**

### **3 Units | CSU Transferable**

- Course Description: This course introduces the knowledge and skills related to food selection and preparation, food product standards and factors contributing to the quality of prepared food.

Terms: Summer, Fall, Winter, and Spring

- Fulfills a LBCC, and CSU Requirements--*please see an ECI Counselor for more information*



## **PUBAD 1: Intro to Public Administration**

### **3 Units | CSU Transferable**

- Course Description: Introductory level course, addressing the principles and practices of public administration in national, state and local government agencies.

Terms: Fall, and Spring

- Fulfills a LBCC, and CSU Requirements--*please see an ECI Counselor for more information*



## **PSYCH 1: Introduction to Psychology**

### **3 Units | UC and CSU Transferable**

- Recommended Preparation: ENGL 1 or ENGL 1H (honors)
- Course Description: This course is an introduction to the scientific study of behavior and mental processes. It will cover critical thinking and the scientific method, biopsychology, sensation and perception, among other related topics.

Terms: Summer, Fall, Winter, and Spring

- Fulfills a LBCC, CSU, and UC Requirements--*please see an ECI Counselor for more information*



(562) 938-5272



[earlycollege@lbcc.edu](mailto:earlycollege@lbcc.edu)



Pacific Coast Campus, AA-109

## **SOCIO 1: Introduction to Sociology**

### **3 Units | UC and CSU Transferable**



- Course Description: This course introduces students to the study of human behavior through an understanding of social organization. Topics include the role of culture, the development of personality, the function of group life and social institutions, among other related topics.
- Terms: Summer, Fall, Winter, and Spring
- 
- Fulfills a LBCC, CSU, and UC Requirements--  
*please see an ECI Counselor for more information*

## **TART 25: Introduction to Theatre**

### **3 Units| UC and CSU Transferable**



- Course Description: This course provides a critical analysis of theater from an audience perspective. The elements of play production from dramatic structure, to the final presentation will be explored. Topics include reading, lectures, discussions on the theory and practice of acting, among others. Field trips and performance attendance is required for this course.
- Terms: Summer, Fall, Winter, and Spring
- 
- Fulfills LBUSD's Performing Arts Requirement--*please see a LBSUD Counselor for more information*
- Fulfills a LBCC, CSU, and UC Requirements--  
*please see an ECI Counselor for more information*

## **12TH GRADE HIGH SCHOOL STUDENTS**

## **ECON 2: Micro Economic Analysis**

### **3 Units | Transferable to both UC and CSU**



- Prerequisite: MATH 130 or MATH 130A & MATH 130B or 1 year of high school intermediate algebra with a grade of B/+ as reflected by the second semester grade or qualification through the math assessment.
- Course Description: Course examines the behaviors of individual households and firms in a mixed enterprise capitalist system. The class will include topics of price theory, distribution, resource allocation, foreign trade, among others.
- Terms: Summer, Fall, Winter, and Spring
- 
- Fulfills LBUSD's Economics Requirement--  
*please see a LBSUD Counselor for more information*
- Fulfills a LBCC, CSU, and UC Requirements--  
*please see an ECI Counselor for more information*



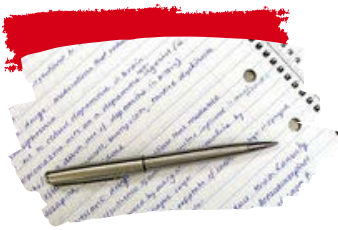
(562) 938-5272



[earlycollege@lbcc.edu](mailto:earlycollege@lbcc.edu)



Pacific Coast Campus, AA-109



## ENGL 1: Reading and Composition

### 3 Units | UC and CSU Transferable

- Prerequisite: Qualification through LBCC's English assessment
- Course Description: In this course, students read and analyze college-level texts in order to write researched, thesis-based essays.
- Terms: Summer, Fall, Winter, and Spring

OR

## ENGL 1S: English 1 & Skills Support

### 5 Units | Transferable to both UC and CSU

- Prerequisite: Qualification through LBCC's English assessment
  - Course Description: In this course, students read and analyze college-level texts in order to write researched, thesis-based essays. The course provides supplemental skills support through scaffolded, collaborative, individualized activities, and one-to-one feedback from a writing instructor necessary to complete ENGL1 criteria.
  - Terms: Summer, Fall, and Spring
- 
- Fulfills 1 Year of LBUSD English 9-12 Requirement--*please see a LBSUD Counselor for more information*
  - Fulfills a LBCC, CSU, and UC Requirements--*please see an ECI Counselor for more information*



---

## FILM 1: Introduction to Film Studies

### 3 Units | UC and CSU Transferable

- Recommended Preparation: ENGL 105 or ESL 34X or qualify for ENGL 1 via the assessment process.
  - Course Description: Introduction to the art of cinema through lecture, discussion, and screening of a wide variety of films and related media. This course examines aesthetic elements like cinematography, production design (mise en scène), editing, sound design, and performance styles, among other topics.
  - Terms: Summer, Fall, Winter, and Spring
- 
- Fulfills LBUSD's Visual Arts Requirement--*please see a LBSUD Counselor for more information*
  - Fulfills a LBCC, CSU, and UC Requirements--*please see an ECI Counselor for more information*



(562) 938-5272



[earlycollege@lbcc.edu](mailto:earlycollege@lbcc.edu)



Pacific Coast Campus, AA-109

Note: This document is subject to change. Please consult with LBCC Counseling.



## **POLSC 1: Introduction to Government**

### **3 Units | Transferable to both UC and CSU**

- Course Description: This course is an introduction to the principles and issues of government and the political process in a diverse society, emphasizing the government of the United States, as well as California state and local governments.
- Terms: Summer, Fall, Winter, and Spring  
---
- Fulfills LBUSD's Government Requirement--  
*please see a LBSUD Counselor for more information*
- Fulfills a LBCC, CSU, and UC Requirements--  
*please see an ECI Counselor for more information*



(562) 938-5272



[earlycollege@lbcc.edu](mailto:earlycollege@lbcc.edu)



Pacific Coast Campus, AA-109

Note: This document is subject to change. Please consult with LBCC Counseling.